

Primary Human Liver Cells and Tissue

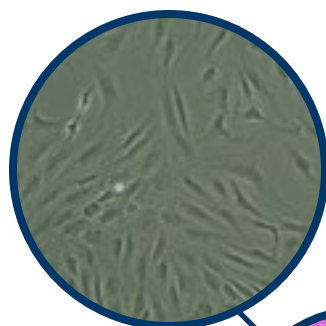
Utilizing the highest standards for tissue recovery and handling, combined with refined cell isolation techniques and advanced post-thaw characterization, LifeNet Health LifeSciences provides cells and tissue of the highest quality and performance for scientific research. LifeNet Health's primary human liver cells and tissue samples are suitable for multiple drug discovery applications, including target identification, validation, screening, toxicity, efficacy, metabolic stability, and assay development.

The LifeNet Health Advantage

- Donor matched cells and tissue samples
- Comprehensive donor profiles include medical and social history
- Broad spectrum of healthy and diseased lots representing various stages of non-alcoholic fatty liver disease
- Access to technical expertise and guidance from our scientific team
- Certificate of Analysis, detailed protocols, and media formulation recommendations provided
- Pathologist assessment of each tissue – trichrome and H&E images, fibrosis and NAS scores provided

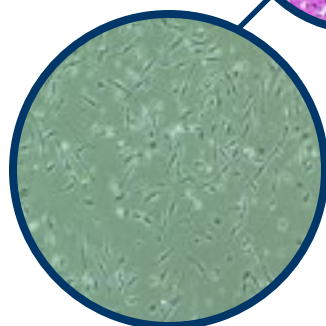
Stellate Cells

- Critical role in liver homeostasis and fibrosis
- Characterized by Immunocytochemistry



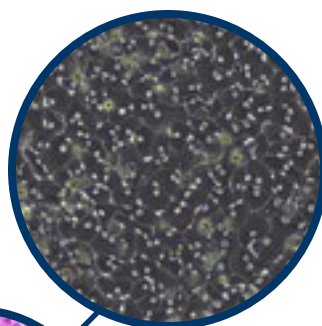
Kupffer Cells

- Macrophages of the liver
- Cytokine response to Lipopolysaccharide (LPS) stimulation



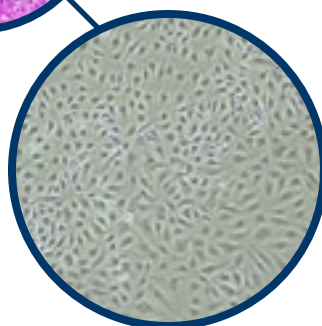
Hepatocytes

- Carry out major liver functions
- 3D Spheroid Formation
- Genotyping of phase I and II drug metabolism enzymes
- CYP450 enzyme profiling and induction response



Endothelial Cells

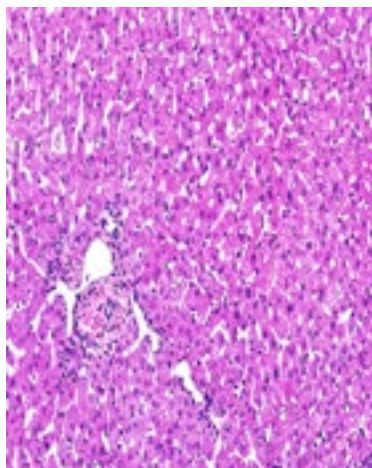
- Regulate molecules entering the liver
- Cell marker expression determined by flow cytometry



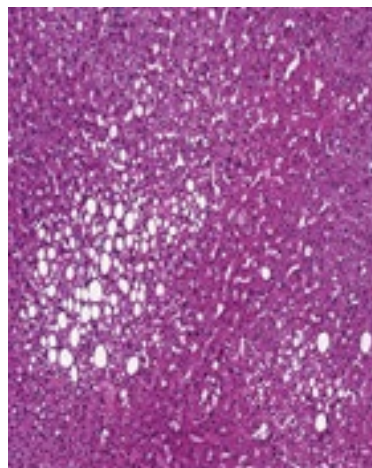
Primary Human Liver Cells and Tissue

Healthy vs. Diseased Tissue

H&E Images

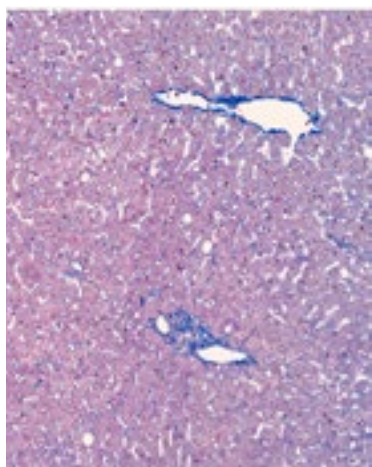


Healthy Liver

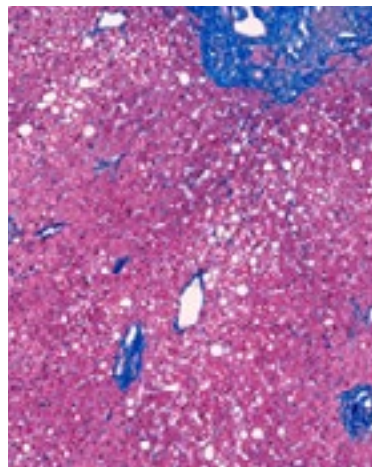


Fatty Liver

Trichrome Images



Healthy Liver



Fatty Liver

Formalin-Fixed Paraffin Embedded

- Whole FFPE blocks
- Glass slides bearing FFPE sections
- Matched H&E and Trichrome images
- Pathologic diagnosis including inflammation and fibrosis scores
- Suitable for histology and immunohistochemistry

Snap Frozen Tissue

- Snap frozen whole tissue
- Detailed donor history and pathology report
- Ideal for nucleic acid and protein isolation for genomic and proteomic analysis

Hepatocyte Media Available

- Thawing, plating, and culture media specially optimized for hepatocytes
- Convenient volumes with pre-mixed supplements
- Extended 18-month shelf life

For more information: lifesciences@lifenethealth.org