

CELL TYPE:	Primary Human Hepatic Stellate Cells	Lot No:	2013556
Storage Condition:	Cryopreserved in Vapor Phase Liquid Nitrogen (< -150°C)		

POST THAW RESULTS				QUALITY CONTROL RESULTS		
Average Viability	Average Viable Cells/Vial	Population Doubling	Average Cell Size	Mycoplasma	Culture Morphology	Phenotype in Culture (ICC)
88%	900,000	> 4 days	28.4 microns	Undetected	Figure 1	Figure 2

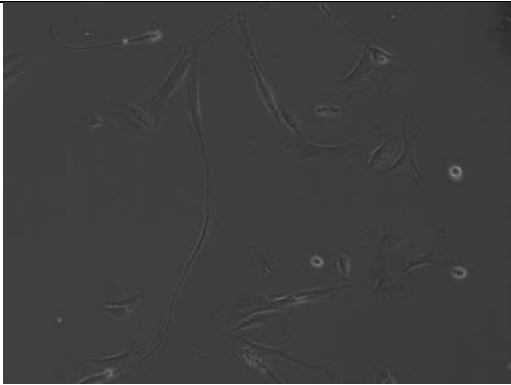
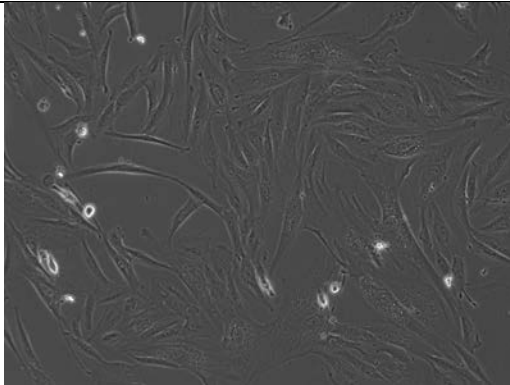
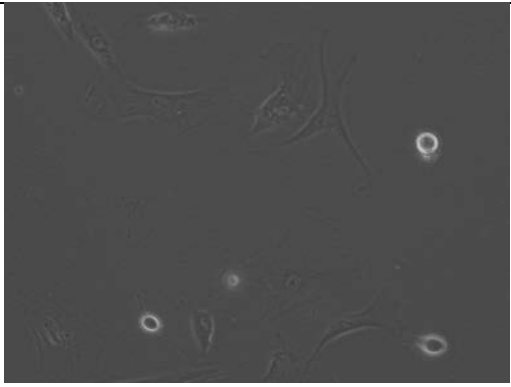
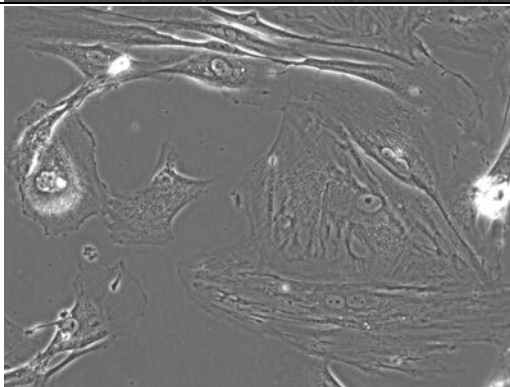
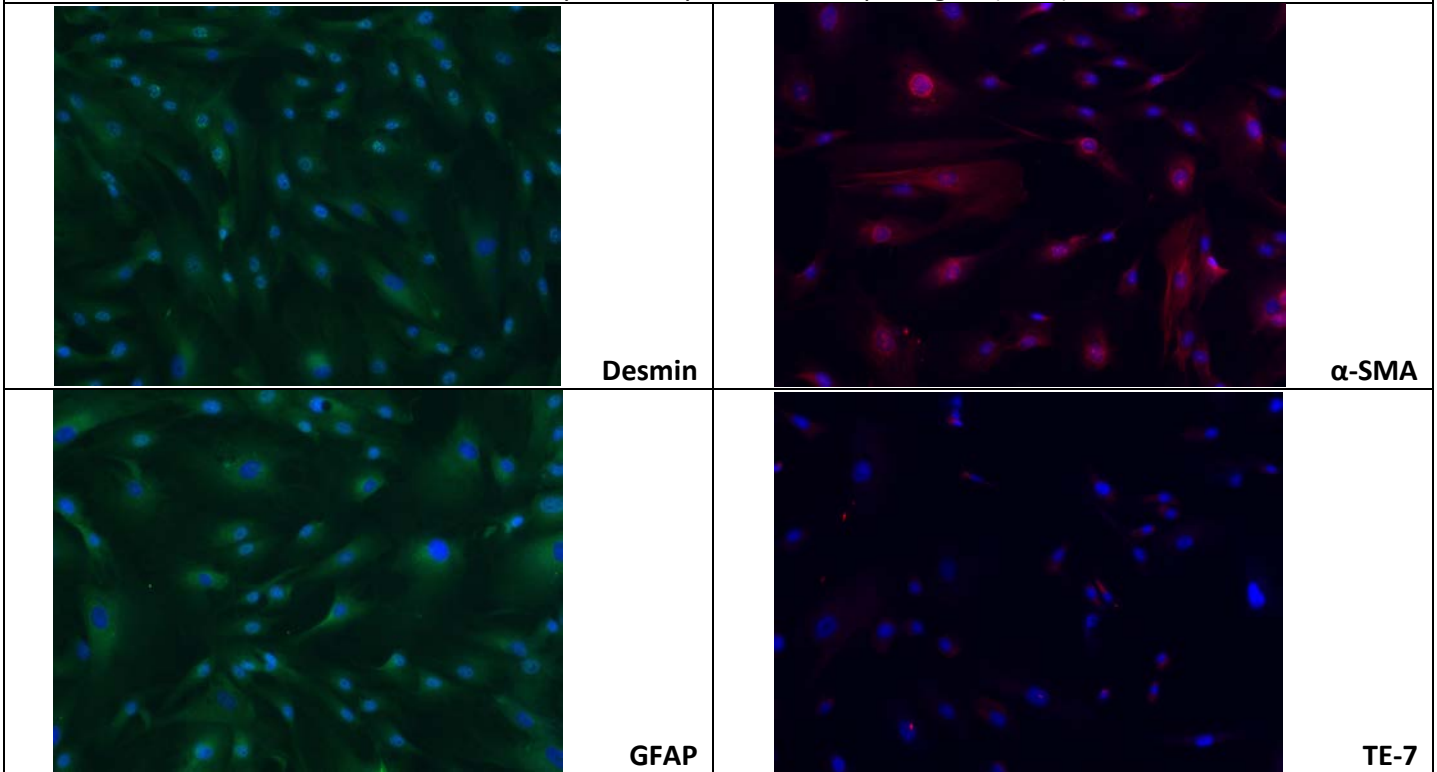
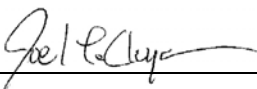
FIGURE 1. CULTURE MORPHOLOGY			
Shown at passage 1			
< 50% Confluence		> 85% Confluence	
	100X		100X
	200X		200X

FIGURE 2. PHENOTYPE IN CULTURE

Characterized by ICC analysis, shown at passage 1 (200x)



Results above are determined by following LifeNet Health’s Stellate Cell Instructions for Use.

Signature:  Date: 6/8/2020

Print Name: Joel LeCluyse Title: Operations Manager

Authorization was obtained from the donor or the donor’s legal next of kin for use of the tissue and its derivatives for research purposes.
Caution: The user should treat all human cells as potential pathogens. Wear protective clothing and eyewear. Practice appropriate disposal techniques for potentially pathogenic or biohazardous materials. For research use only. Not intended for human or animal therapeutic or diagnostic use.

For more information: cells_tissues@lifenethealth.org